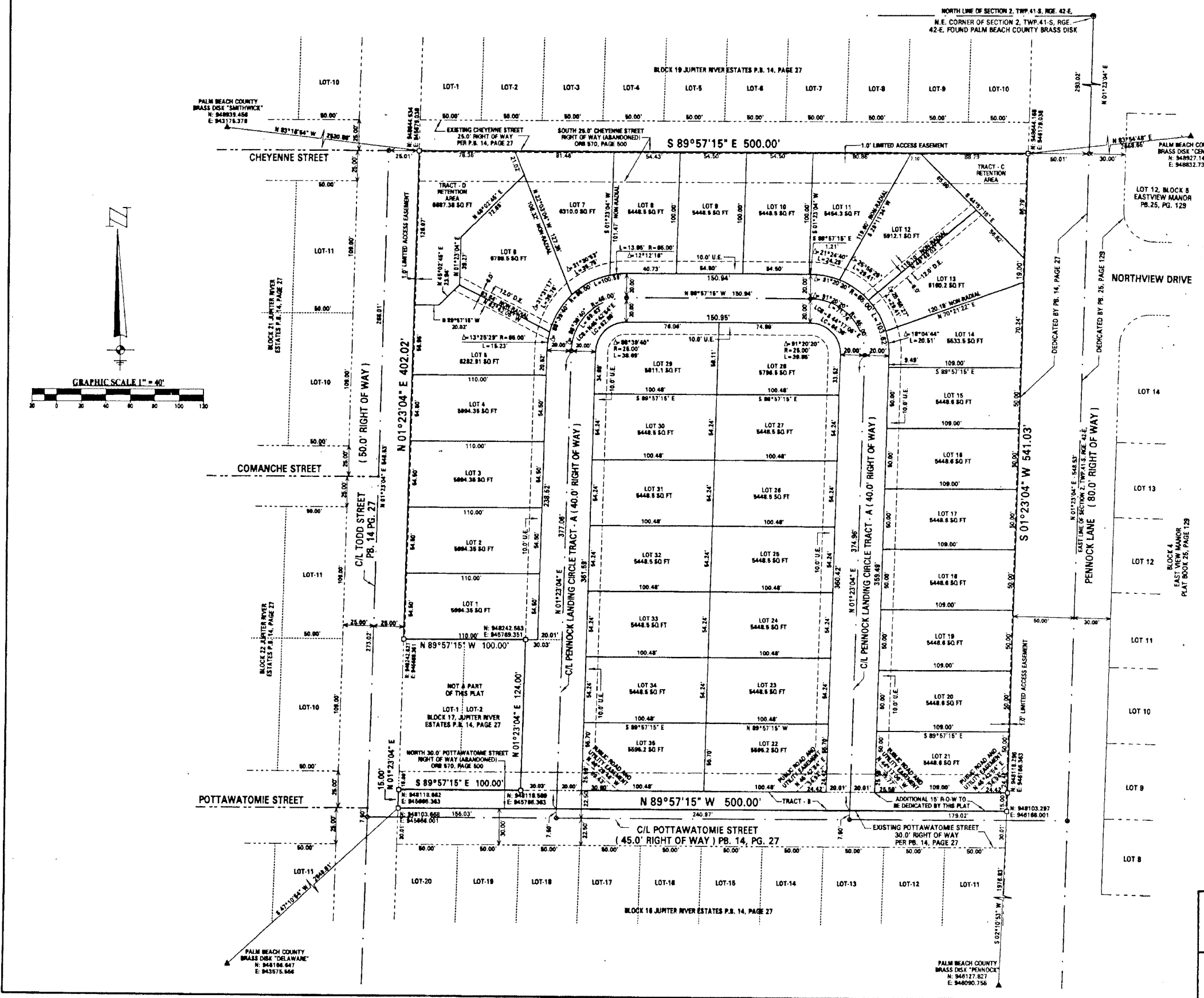


PENNOCK LANDING

LYING IN SECTION 2, TOWNSHIP 41 SOUTH, RANGE 42 EAST,
TOWN OF JUPITER, PALM BEACH COUNTY, FLORIDA


OCTOBER, 2000 SHEET 2 OF 2



SURVEYOR'S NOTES:

- All bearings shown hereon are relative to the State Plane Coordinate System, NAD 83, 1990 adjustment.
- Building setback lines shall be as required by the current Building and Zoning regulations of the Town of Jupiter, Palm Beach County.
- Abbreviations used on this plat are as follows:
 ◊ = (P.C.P.) Permanent Control Point No. LB 4165.
 □ = (P.R.M.) Permanent Reference Monument No. LB 4165, unless otherwise indicated.
 C/L = Centerline
 O.R.B. = Official record Book
 P.B. = Plat Book
 R = Curve Radius
 L = Curve Length
 Δ = Curve Delta
 LCB = Long Chord Bearing
 LC = Long Chord
 TWP = Township
 RGE = Range
 sq. ft. = Square Feet
 D.E. = Drainage Easement
 U.E. = Utility Easement
 N: 00.00 = State Plane Coordinate Northing
 E: 00.00 = State Plane Coordinate Easting
- State Plane Coordinate Information.
 A. Coordinates shown are grid
 B. Datum = NAD 83, 1990 Adjustment
 C. Zone = Florida East
 D. Linear unit = US Survey Foot
 E. Coordinate system 1983 State Plane Transverse Mercator Projection
 F. All distances are ground
 G. Scale Factor = 1.00003590
 H. Ground distance x scale factor = grid distance
- This plat, as recorded in its graphic form, is the official depiction of the subdivided lands described herein and will in no circumstances be supplanted in authority by any other graphic or digital form of the plat.
- NOTICE: There may be additional restrictions that are not recorded on this plat that may be found in the Public Records of this county.

THIS INSTRUMENT WAS PREPARED BY DONALD D. DANIELS IN THE OFFICES OF DONALD D. DANIELS, INC.

 DONALD D. DANIELS, INC. Consulting Surveyors & Mappers	PENNOCK LANDING		
	Florida Certificate No. 4165 725 North A-1-A, Suite C-111 Jupiter, Florida 33477 TEL: (561) 747-9894	REF: 2/41/42 OFFICE: DAN B. DATE: OCTOBER, 2000	Revision: SCALE: 1" = 40' DWG. NO.: 99-113 SHEET 2 OF 2